

Description

Precision bimetallic- thermometer in stainless steel case. Execution axial according DIN EN 13190

Accuracy

Class 1 according DIN EN 13190

Temperature range

Scale ranges according to DIN EN 13190
see backpage
(special scale ranges upon request)

Case

Case with stainless steel 1.4301 / AISI304
Ingress protection IP 41 according to IEC 529
Instrument glass window
Nominal sizes 50, 63, 80, 100, 160 mm

Pointer and dial

Aluminium dial varnished white / black lettering
Aluminium pointer varnished black

Process connection

Fixed external thread
Wetted parts of stainless steel 1.4571 / AISI316Ti

Standard options

- Maximum- and marking pointer

Additional options

(upon request)
- Polycarbonate - window
- Dual scales °C/°F, customer specific scales
- Special materials for wetted parts

Suggestions for installation of thermometers with fixed external thread

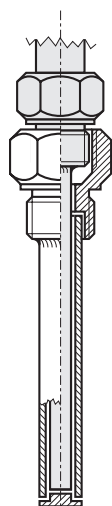
For further installation possibilities see chapter **protection tubes**

Protection tube

screw-in
type,
fabricated

according to
datasheet :

12.1
12.0

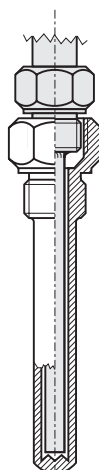


Protection tube

screw-in
type,
solid drilled

according to
datasheet :

12.1
12.0

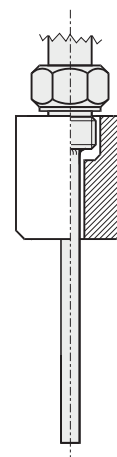


Thread, joint

weld-in
type

according to
datasheet :

18.11

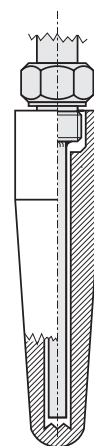


Protection tube

weld - in type,
solid drilled

according to
datasheet :

11.1

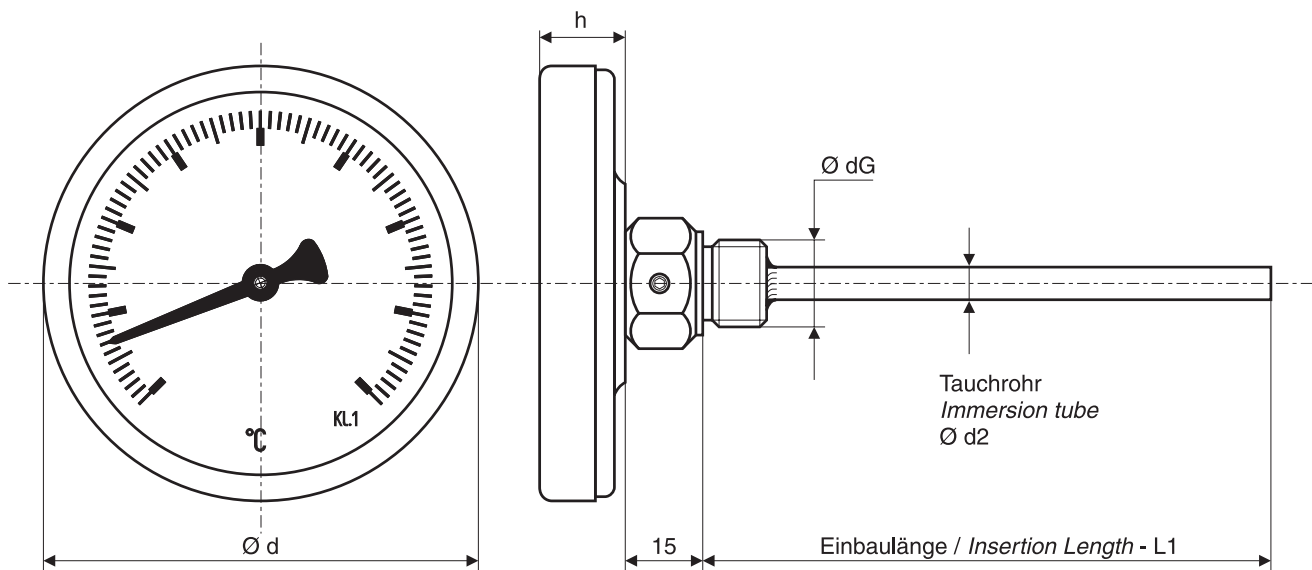


Bimetallic- thermometer

Stainless steel case, with fixed external thread

Datasheet 27.11

Bimetallic- thermometers



Case dimensions	
Ordering code	C
NG 50	2
NG 63	3
NG 80	4
NG 100	5
NG 160	6

Scale ranges	
Ordering code	F G
- 40 ... + 40 °C	4 9
- 40 ... + 60 °C	5 0
- 30 ... + 50 °C	5 2
- 20 ... + 40 °C	5 3
- 20 ... + 60 °C	5 4
0 ... + 60 °C	5 8
0 ... + 80 °C	5 9
0 ... + 100 °C	6 0
0 ... + 120 °C	6 1
0 ... + 160 °C	6 2
0 ... + 200 °C	6 3
0 ... + 250 °C	6 4
0 ... + 300 °C	6 5
0 ... + 350 °C	6 6
0 ... + 400 °C	6 7
0 ... + 500 °C	6 8
Special range	9 9

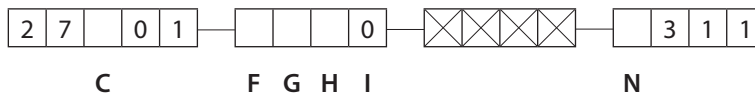
Additional equipment	
Ordering code	H I
Without	0 0
Marking pointer	5 0
Maximum pointer	6 0

Thread		
Ordering code	N	
G 1/2"	27 mm flats	1
G 3/4"	32 mm flats	2
G 1"	41 mm flats	3
NPT 1/2"	27 mm flats	4
NPT 3/4"	32 mm flats	5
M 18 x 1,5	24 mm flats	6
M 20 x 1,5	27 mm flats	7
M 24 x 1,5	32 mm flats	8
Special thread		9

Ordering-code :

For ordering please fill out all empty digits in the order code on the right.

The code numbers for all free digits you find in the charts above.



For ordering please declare in plain text :

Ø Stem (d₂) :

4mm 6mm

8mm

Insertion length (L₁):

..... mm

Special - range (upon request):

..... °C to °C

Protectiontube acc. to datasheet:

.....