

# Digital Indicator DA 2000 K

96x24 mm panel meter

# Datasheet 86.2

Digital Indicators

**Description :** 3½ - digit digital indicator for flush panel mounting

**Display :** LED display - red  
display height 14,2 mm  
Maximum range :  
-1999...+1999 digit

**Inputs :** Platinum RTD's (Pt100)  
according DIN IEC 751  
Thermocouples  
according DIN IEC 584  
Uniform signals :  
4...20 mA, 0...20 mA, 0...10 V

**Housing:** Plastic case, black  
Front dimensions :  
96 × 24 mm  
Cut out dimensions :  
92 × 22 mm  
Mounting depth : ~148 mm

**Protection class :** Front side : IP 41  
Back side : IP 20

**Clamps :** Screw- clamps max. dia. 2,5 mm<sup>2</sup>



**Supply :** 230 V/AC, 45...65 Hz  
optional :  
115 V/AC, 45...65 Hz or  
24 V DC physically separated

**Typical applications :** Process indications

## Technical data for uniform signals inputs 4-20 and 0-20 mA :

Temperature influence : 100 ppm / K  
Display Error : ± 0,1 %, ± 1 digit  
Inherent resistance max. 100 Ω  
Maximum current 50 mA

## Technical data for uniform signals inputs 0-10 V :

Temperature influence : 100 ppm / K  
Display error : ± 0,1 %, ± 1 digit  
Inherent resistance > 55 KΩ

## Technical data for thermocouples (type K and type J) :

For the couples +NiCr/-Ni (K) and +Fe/-CuNi (J)  
Cold junction compensation for the range of 0-60 °C  
Temperature influence : 250 ppm / K  
Display error : ± 8 K for J  
± 5 K for Typ K < 800 °C  
± 15 K for Typ K > 800 °C

## Technical data for resistance thermometer inputs (Pt100) :

(in 3-wire circuit max. 10 Ω per wire)  
Temperature influence : 100 ppm / 1 K  
Display error : ± 0,2 %, ± 1 digit

# Digital Indicator DA 2000 K

96x24 mm panel meter

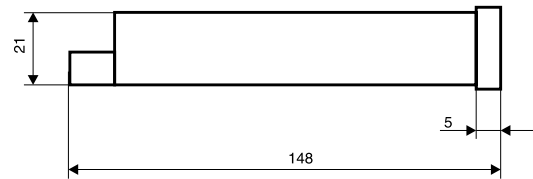
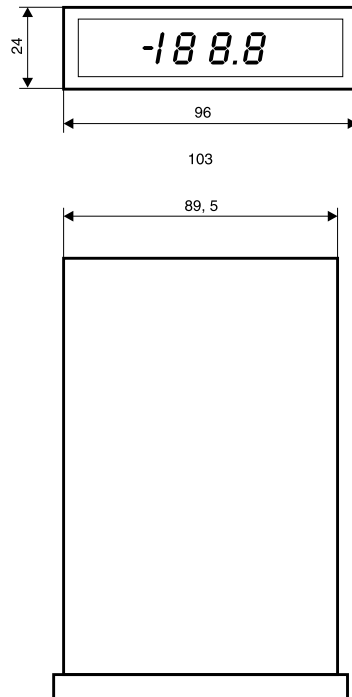
# Datasheet 86.2

Digital Indicators

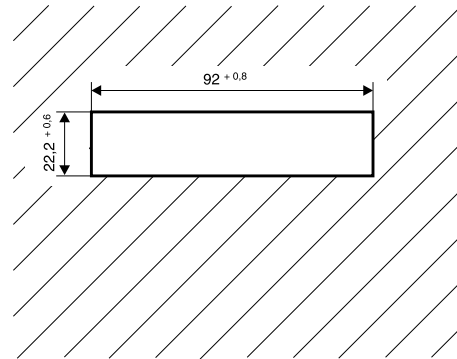
Ranges / Inputs	
Ordering - code	F G
-199,9...+199,9 °C RTD's Resolution 0,1 °C	1 0
-200...800 °C RTD's Resolution 1 °C	1 1
0...1600 °C Thermocouples Resolution 1 °C	1 2
0...200 °C Thermocouples Auflösung 0,1 °C	1 3
0...200 mV Resolution 100 µV	1 4
0...2 V Resolution 1 mV	1 5
<b>Uniform Signals :</b>	
4...20 mA without supply *	1 6
4...20 mA with supply *	1 7
0-20 mA	1 8
0-10 V	1 9

Please define range and unit in plain text if you use uniform signals.

\* "supply" means that you have a 24V supply output for transmitters.



Schalttafel Ausschnitt :



Sensors	
Ordering - code	H I
Uniform signal	0 0
Pt 100 DIN IEC 751	1 1
Ni / CrNi ( K )	1 6
FeCu / Ni ( J )	1 7
FeCu / Ni ( L )	2 0

Output	
Ordering - code	L M
without	0 0
0 ... 20 mA	1 1
4 ... 20 mA	1 2
0 ... 10 V	1 3

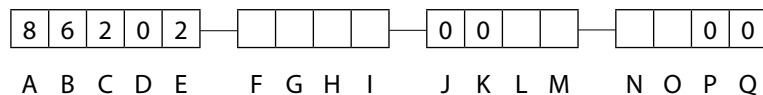
Supply	
Ordering - code	O
230 V / AC	0
115 V / AC	1
24 V / DC	4

Pt 10, Pt 25, Pt 1000 und other Thermocouples according DIN IEC 584 - upon request

## Ordering-code :

for ordering please fill out all empty digits in the order code on the right.

The code numbers for all free digits you find in the charts above.



## For ordering please declare in plain language :

Range for uniform signals :

von .....bis.....

Unit :

.....