

# Digital Indicator DA20000

96×48 mm panel meter

# Datasheet 86.7

Digital Indicators

**Description :** 4½ - digit digital indicator for flush panel mounting

**Display :** LED display - red  
display height 14,2 mm  
Maximum range :  
-19999...+19999 digit

**Inputs :** Uniform signals :  
4...20 mA, 0...20 mA, 0...10 V

**Housing:** Plastic case, black  
Front dimensions :  
96 × 48 mm  
Cut out dimensions :  
92 × 45 mm  
Mounting depth : ~148 mm



**Protection class :** Front side : IP 41  
Back side : IP 20

**Clamps :** Screw- clamps max. dia. 2,5 mm<sup>2</sup>

**Supply :** 230 V/AC, 45...65 Hz optional : 115 V/AC, 45...65 Hz or  
24 V DC physically separated

**Typical applications :** Process indications

## Technical data for uniform signals inputs 4-20 and 0-20 mA :

Temperature influence : 100 ppm / K  
Display Error : ± 0,1 %, ± 1 digit  
Inherent resistance max. 100 Ω  
Maximum current 50 mA

## Technical data for uniform signals inputs 0-10 V :

Temperature influence : 100 ppm / K  
Display error : ± 0,1 %, ± 1 digit  
Inherent resistance > 55 KΩ

# Digital Indicator DA20000

96x48 mm panel meter

# Datasheet 86.7

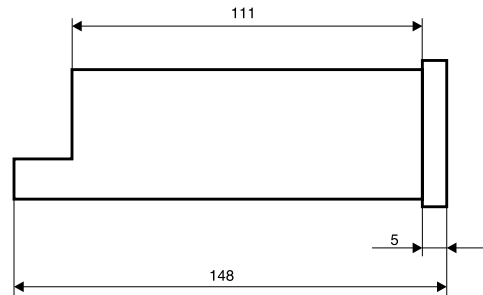
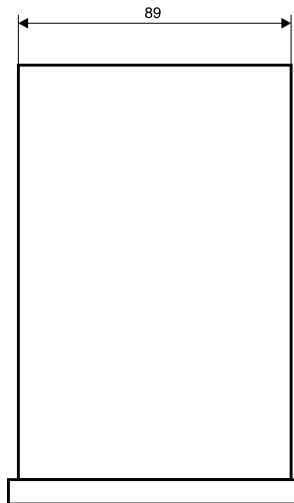
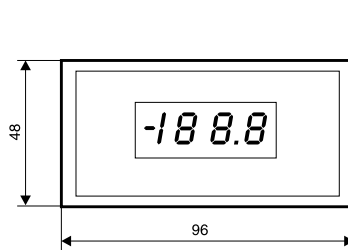
Digital Indicators

Ranges / Inputs	
Ordering - code	F G
4...20 mA without supply *	1 6
4...20 mA with supply *	1 7
0-20 mA	1 8
0-10 V	1 9

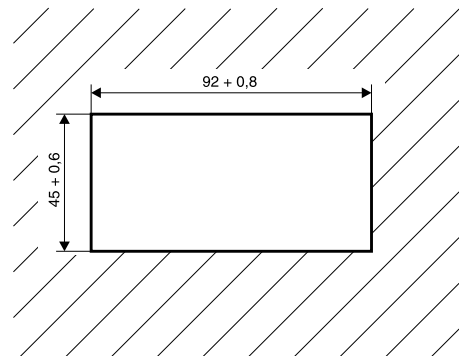
Please define range and unit in plain text if you use uniform signals.

\* "supply" means that you have a 24V supply output for transmitters.

Supply	
Ordering - code	O
230 V / AC	0
115 V / AC	1
24 V / DC	4



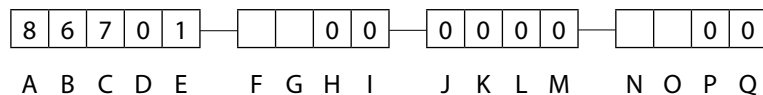
Schalttafel Ausschnitt :



## Ordering-code :

for ordering please fill out all empty digits in the order code on the right.

The code numbers for all free digits you find in the charts above.



## For ordering please declare in plain language :

Range for uniform signals :

von .....bis.....

Unit :

.....