

Description

Precision gasexpansion- thermometer, case with rim-ring. Execution axial according DIN EN 13190

Accuracy

Class 1 according DIN EN 13190

Temperature range

Scale ranges according to DIN EN 13190 see backpage
(special scale ranges upon request)

Case

Case with rim-ring stainless steel 1.4301 / AISI304
Ingress protection IP 65 according to IEC 529
Instrument glass window
Nominal sizes 63, 80, 100 mm

Pointer and dial

Aluminium dial varnished white / black lettering
Aluminium pointer varnished black

Process connection

Fixed external thread

Wetted parts of stainless steel 1.4571 / AISI316Ti

Standard options

- Oil- fillings for damping
- Maximum- and marking pointer

Additional options (upon request)

- Safety glass or polycarbonate window for food industry
- Adjustable Pointer
- Dual scales °C/°F, customer specific scales
- Special materials for wetted parts

Suggestions for installation of thermometers with fixed external thread

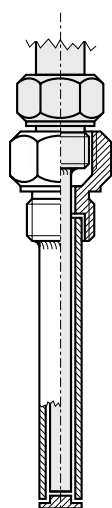
For further installation possibilities see chapter **protection tubes**

Protection tube

screw-in
type,
fabricated

according to
datasheet :

12.1

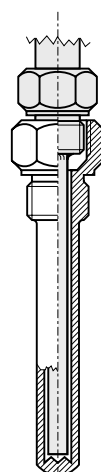


Protection tube

screw-in
type,
solid drilled

according to
datasheet :

12.1

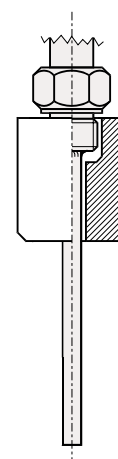


Sleeve

weld-in
type

according to
datasheet :

18.11



Protection tube

weld-in type,
solid drilled

according to
datasheet :

11.1

