

## Description

Precision gasexpansion- thermometer with rim - ring.  
Execution with front flange according DIN EN 13190

## Accuracy

Class 1 according DIN EN 13190

## Temperature range

Scale ranges according to DIN EN 13190 see backpage  
(special scale ranges upon request)

## Case

Case with rim-ring stainless steel 1.4301 / AISI304  
Ingress protection IP 65 according to IEC 529  
Instrument glass window  
Nominal sizes 63, 80, 100 mm

## Capillary

Stainless steel 1.4571 / AISI316Ti  
Stainless steel with plastic coat  
Stainless steel with spiral protecting hose

## Pointer and dial

Aluminium dial varnished white / black lettering  
Aluminium pointer varnished black

## Process connection

Plain stem  
Wetted parts of stainless steel 1.4571 / AISI316Ti

## Standard options

- Oil- fillings for damping
- Maximum- and marking pointer

## Additional options (upon request)

- Safety glass or polycarbonate window for food industry
- Adjustable Pointer
- Dual scales °C/°F, customer specific scales
- Special materials for wetted parts

## Suggestions for installation of thermometers with plain stem

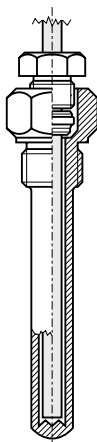
For further installation possibilities see chapter **protection tubes**

### Protection tube

with integrated  
compression  
fitting

according to  
datasheet :

15.10  
16.10

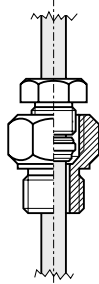


### Compression fitting

screw-in  
type

according to  
datasheet :

18.10

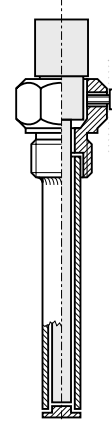


### Protection tube

with lateral  
attachment  
screw

according to  
datasheet :

16.16



### Compression fitting

weld-in type  
for flexible  
position

according to  
datasheet :

18.10

