

Steam Syphons

from seamless steel tube

Datasheet 67.1

Manometer accessories

Description

Steam syphons are protecting pressure gauges from pulsing pressure shocks and overheating .

The process media will condens in the syphon and and will prevent the contact of the warm media with the membrane.

Before putting the process into operation the steam syphon should be filled with an appropriate barricading liquid.

Tube diameter : 20 mm

Entry : plain end for welding (DIN 16 282)
- male thread upon request

Exit : Male thread according DIN 16 282 type 6 - G $\frac{1}{2}$ " left with tightening thread DIN 16283 G $\frac{1}{2}$ " right - left
- 1/2" NPT female thread available upon request

Types: U - type (for horizontal installation)
Trumpet - type (for vertical installation)

Temperature- / pressure- Limits :

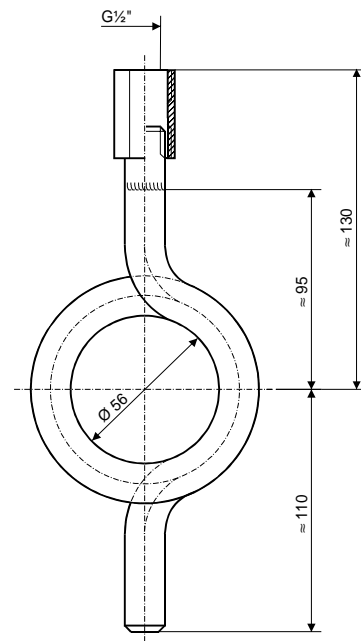
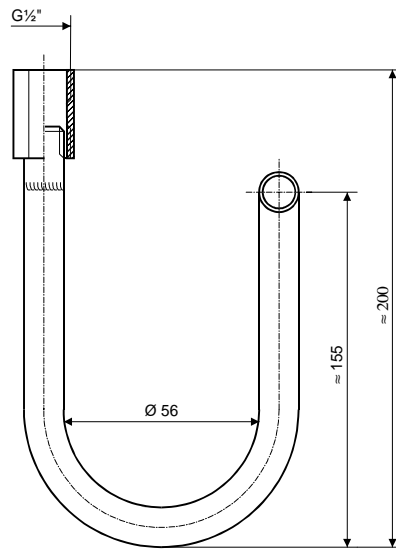
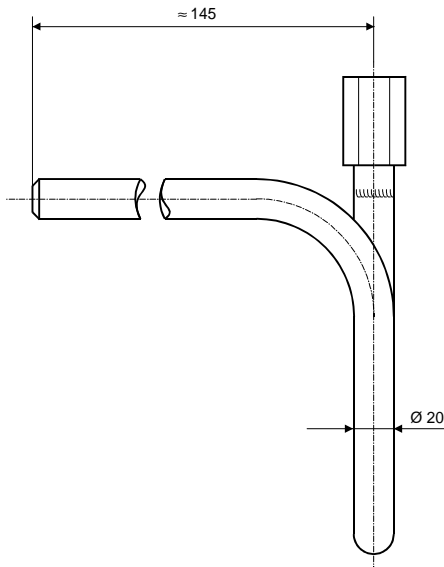
Max. Arbeitstemperatur Max. Working Temperature °C	Max. Arbeitsdruck Max. Working Pressure bar
120	100
300	80
400	63

Trumpet Type



U - Type





Type	
Ordering - code	D
U - Type	1
Trumpet - Type	2

Material	
Ordering - code	E
Steel St 35.8	1
Stainless steel 1.4571	2
Special material	9

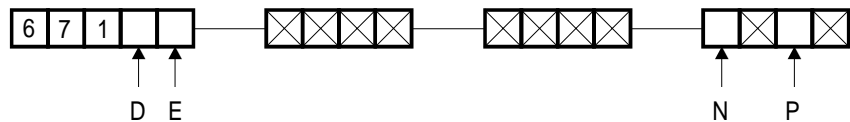
Pressure entry	
Ordering - code	N
Plain, for welding	0
Male thread G 1/2"	1
Special thread	9

Pressure exit	
Ordering - code	P
Male thread G 1/2"	0
Tightening nut - steel	1
Tightening nut ss 1.4571	2
Special thread	9

Ordering-code :

for ordering please fill out all empty digits in the order code on the right.

The code numbers for all free digits you find in the charts above.



Please declare in plain text :

Special material :

Special pressure exit :

Special pressure entry :

Others :