

Description :

Resistance thermometer for industrial applications.
Type B according to DIN 43765.

Installation :

For the installation into protection tubes.
Direct installation into the process is not possible.
The connection head can be turned after the installation.

Measuring Insert:

Execution according DIN 43762
The insert can be replaced seperately. For single measuring inserts see datasheet 801.

Measuring Element :

Pt100 according to DIN EN 60751 / IEC 751
other Measuring elements e.g. Pt1000 or Ni100 upon request

Accuracy :

Class A or B according to DIN EN 60751 / IEC 751
Also available with reduced tolerances e.g. 1/5 DIN Cl. B

Material of wetted parts

Stainless steel AISI316Ti (1.4571)
other upon request

Electrical connection:

Ceramic terminal block for 1 x Pt100 2-, 3- or 4- wire connection
or 1 x Pt100 2- or 3- wire connection.
Also available with mounted head transmitter.

Maximum Temperature Range :

-50...+550 °C



Picture shows execution with connection head type B

Suggestions for installation of resistance thermometers with revolving gland nut

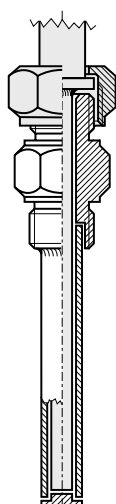
For further installation possibilities see chapter **protection tubes**

Protection tube

Screw in type, fabricated

according to datasheet :

13.1
13.0

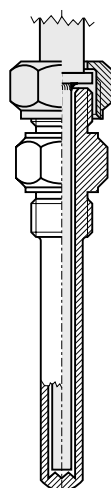


Thread, joint

Screw in type solid drilled

according to datasheet :

13.1
13.0



Protection tube

Weld - in type solid drilled

according to datasheet :

11.0

