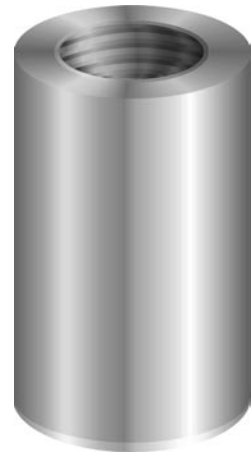


Description :

weld-in tubes for thermometer and protection tubes

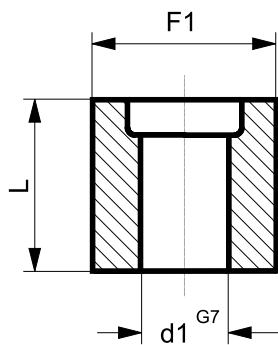
- sleeve with internal thread for thermometers and screw-in protection tubes
- socket for weld-in protection tubes

customized executions are available upon request

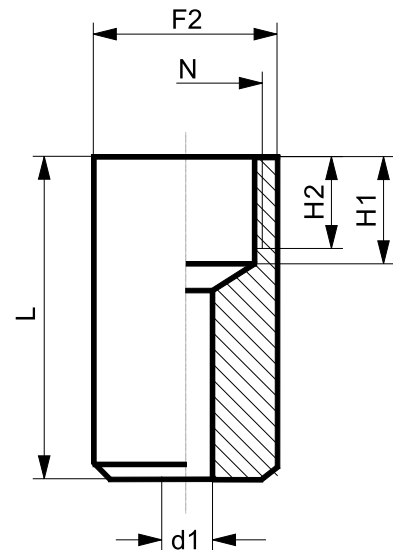


Socket

Accessories for weld-in protection tube according form 4 or form D



Sleeve with internal thread



The dimension L, F1 and F2 must be defined by the user

Execution:

The dimension d1 has to correspond with the dimension of the protection tube;
for form D it is 24 or 30mm and for form 4 it is 18, 24 or 32mm

d1	N	H1	H2
7	G 1/2"	14	12
9			
11	G 3/4"	16	14
13			

Process connection

for protection tube and thermometer

Datasheet 18.11

accessories for protection tubes

Type	
Ordering code	F
sleeve	1
socket	2

For the **socket** the diameter d1 must be declared

Please declare the length L and diameter F1 below in plain text

Material		
Ordering code		H
Steel C 22.8	(1.0460)	1
Stainless steel	(1.4571)	2
10CrMo9-10	(1.7380)	3
13CrMo4-4	(1.7335)	4
16Mo3	(1.5415)	5

The following choices are only for the **sleeve with internal thread**

Please declare the length L and diameter F1 below in plain text

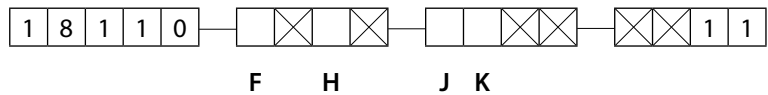
Process connection	
Ordering code	J
G 1/2"	2
G 3/4"	3
Special thread	9

Internal diameter d1	
Ordering code	K
for Sensor 3mm	1
for Sensor 6mm	2
for Sensor 8mm	3
for Sensor 10mm	4
for Sensor 12mm	5
Special diameter	9

Ordering-code :

for ordering please fill out all empty digits in the order code on the right.

The code numbers for all free digits you find in the charts above.



For ordering please declare in plain text :

Socket Ø d1 :

..... mm

Length L:

..... mm

Ø F1 or Ø F2:

..... mm