

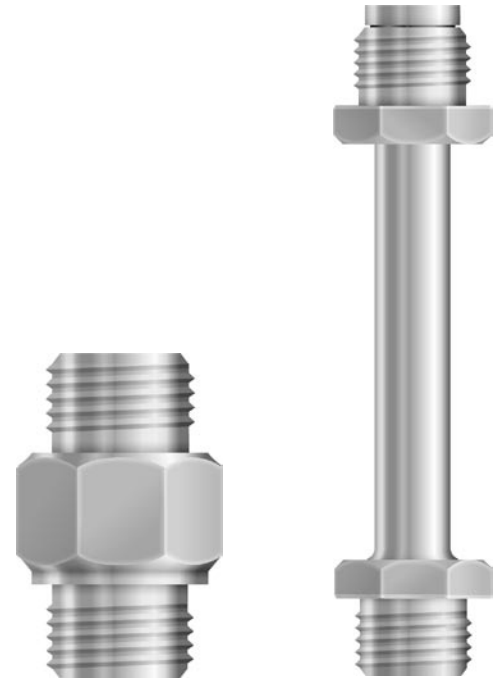
## Description:

- screw-in connection (adapter from internal thread to external thread)

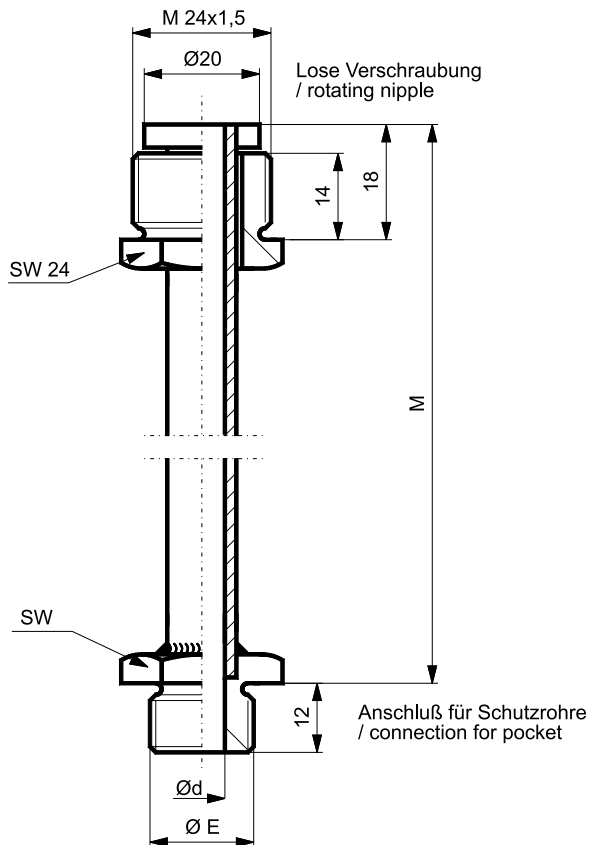
necktube for resistance thermometers

- for mounting in insulated pipes
- to increase the distance between connection head and process

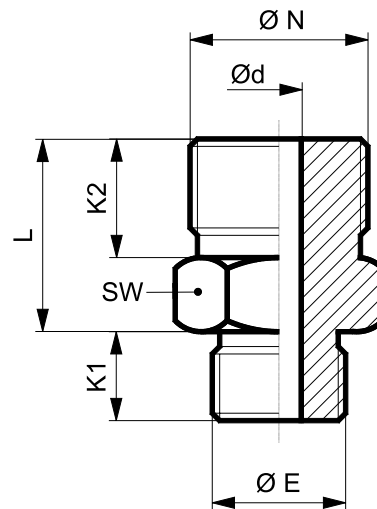
Material Stainless steel 1.4571



## Dimensions for necktube



## Dimensions for screw-in connection



Ø E	Ø d	M	SW	washer*
M 18 x 1,5	7 oder	155	24	C 18 x 22
G ½"			27	C 21 x 26
G ¾"	32		C 27 x 32	

\*acc. DIN 7603

Ø d	Ø E	Ø N	K1	K2	L	SW
7	M 18 x 1,5	M 24 x 1,5	12	16	26	24
9	G ½"	G ½"	15	15	30	27
11	G ¾"	G ½"	15	15	30	32
13	G 1"	G ½"	17	15	30	41

# Connections and necktubes

for thermometer

# Datasheet 18.13

accessories for protection tubes

Type	
Ordering code	F
screw-in connection	1
necktube	2

Internal diameter	
Ordering code	K
4mm *	1
7mm	2
9mm	3
11mm *	4
13mm *	5
Special diameter *	9

\* not valid for necktubes

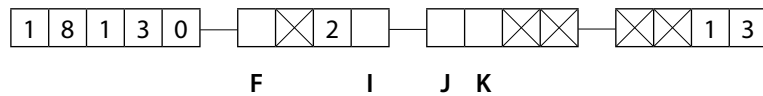
Process connection	
Ordering code	I
G 1/2"	1
G 3/4"	2
G 1"	3
M 18 x 1,5	6
Special thread	9

Instrument connection	
Ordering code	J
G 1/2"	1
M 24 x 1,5	8
Special thread	9

### Ordering-code :

for ordering please fill out all empty digits in the order code on the right.

The code numbers for all free digits you find in the charts above.



### For ordering please declare in plain text :

Special material :

.....

Special length:

..... mm

Special bore:

..... mm