

Description :

protection tubes form 4 according to DIN 43772-2
with flange according to DIN 2527 and EN DIN 1092-2
ANSI flange upon request

- Suitable for thermometers with external thread (our types 11 and 12)

Customized executions also available upon request

- Different materials available - see backpage (also special materials e.g. Hastelloy, Titanium, Nickel etc.)



Diameter and connection dimension

d1	F2	N	F3	H1	H2	suitable for
3,5	18	M 14 x 1,5	9	14	12	Sensors
7	24	M 18 x 1,5	12,5		15	
9	26	G ½" (M 20 x 1,5)	15	19		17
11	32	G ¾" (M 27 x 2)	17		17	
13			19			
14			20			

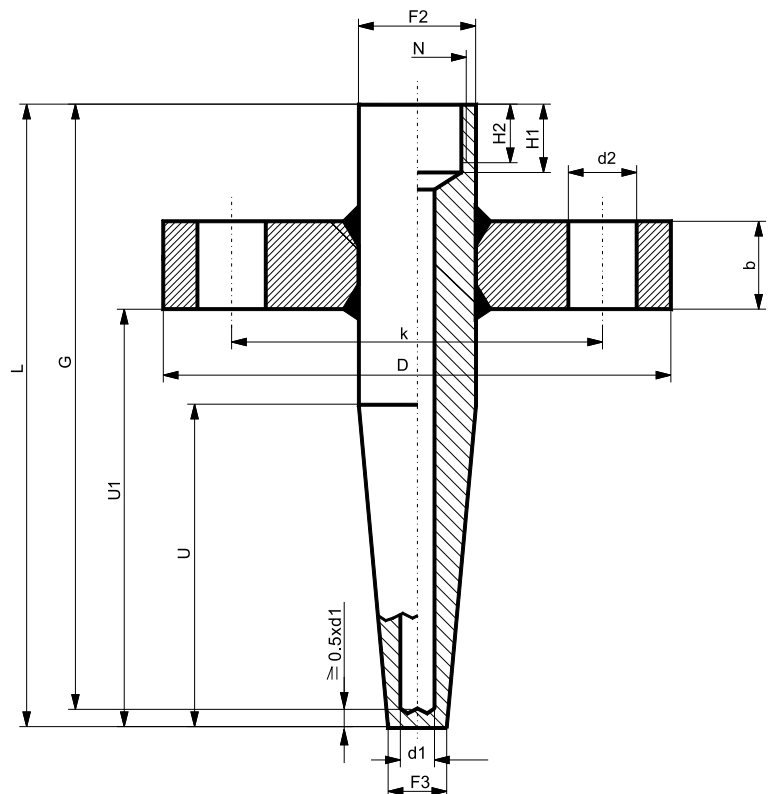
Length dimension

L ₀ ⁺²	G ₀ ⁺¹	U ₀ ⁺²	U1 ₋₂ ⁺²	Length type
110	105	65	--	1
140	135	65	--	2
170	165	125	--	3
200	195	65	130	4
260	255	125	190	5
410	405	275	340	6

* not with Ø 3,5

Flange dimension (for PN 16)

b	d1	k	D	DN
16	4 x 14	75	105	20
16	4 x 14	85	115	25
16	4 x 18	100	140	32
16	4 x 18	110	150	40
18	4 x 18	125	165	50
18	8 x 18	145	185	65



Flange-protection tube

solid drilled, with female instrument connection

Datasheet 19.11

Protection tubes

Length type	
Ordering code	G
Type 1	1
Type 2	2
Type 3	3
Type 4	4
Type 5	5
Type 6	6
Special length	9

Material		
Ordering code		H
Steel C 22.8	(1.0460)	1
Stainless steel	(1.4571)	2
10CrMo9-10	(1.7380)	3
13CrMo4-4	(1.7335)	4
16Mo3	(1.5415)	5

Instrument connection	
Ordering code	J
G 1/2"	1
G 3/4"	2
M 20 x 1,5	7
Special thread	9

Bore	
Ordering code	K
for Sensor 3mm	1
for Sensor 6mm	2
for Sensor 8mm	3
for Sensor 10mm	4
for Sensor 12mm	5
Special bore	9

Coatings	
Ordering code	L
Without	0
TempCoat	1
Delta MKS	2
MagnaCoat 1508	3
MagnaCoat 3005	4
Special coating	9

Certificate acc. DIN EN 10204	
Ordering code	M
Without	0
Certificate 2.2	1
Certificate 3.1	3
Certificate 3.2	4

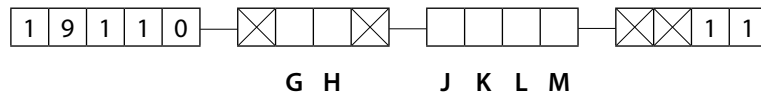
The certificates 2.2 and 3.1 are also available with a pressure inspection

Technical data for protective coating see datasheet 10.11, 10.12 und 10.13

Ordering-code :

for ordering please fill out all empty digits in the order code on the right.

The code numbers for all free digits you find in the charts above.



For ordering please declare in plain text :

Special material :

Special length:

Special bore:

.....

..... mm

..... mm